

THE EMBANKMENT

DRINK  
DINE  
DANCE

ALL UNDER ONE ROOF

ABOUT US	2 >
RESTAURANT & BAR	3 >
FLOOR PLAN RESTAURANT & BAR	4 >
BEER GARDEN	5 >
PERGOLAS	6 >
GLASS HOUSES	7 >
GARDEN ROOM	8 >
MEETINGS & EVENTS	9 >
FLOOR PLAN GARDEN ROOM	10 >
TERMS & CONDITIONS	11 >
BUFFET MENU	12 >
SIGNATURE MENU	13 >
CHEF'S SELECTION MENU	14 >
BBQ MENU	15 >
DRINKS PACKAGES	16 >
POLICIES	17 >

## THE CLUE TO OUR LOCATION IS IN THE NAME!

Stratford's idyllically landscaped Embankment boasts wonderful views over the River Avon. We've got the perfect spot — a stunning location with a buzzing alfresco terrace loved by both locals and tourists. Combining traditional glamour with contemporary charm, The Embankment offers a modern, cosy and inviting atmosphere — ideal for long lunches, sunset drinks or simply a coffee and a catch-up.

It's also the perfect destination for celebrations of all kinds, from intimate gatherings to lively parties and unforgettable events in one of Stratford's most scenic settings.

## OUR ETHOS

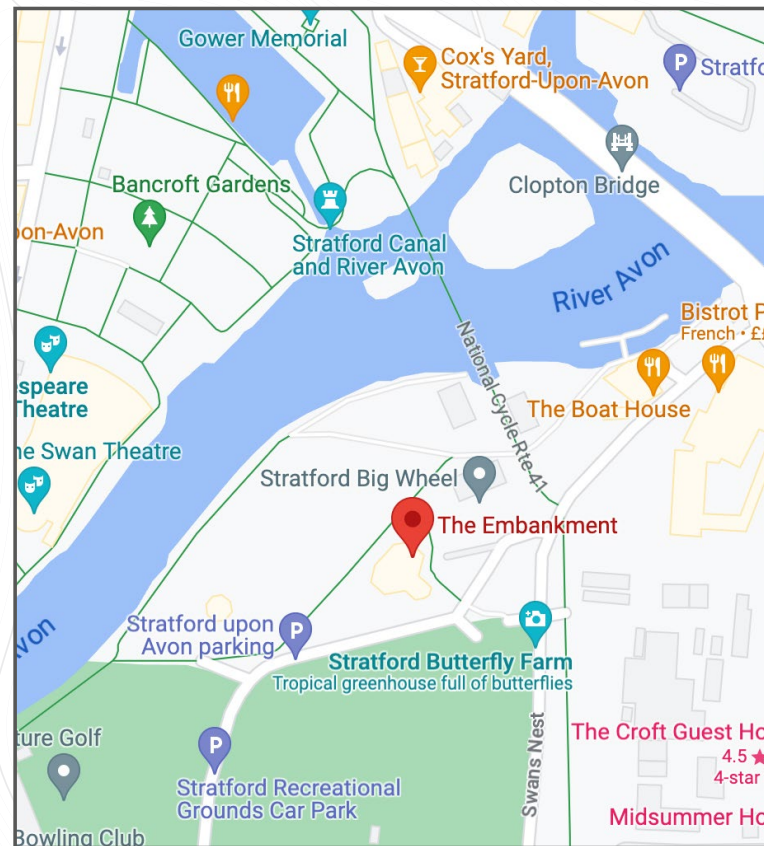
Time for something different...The Embankment is an independent business championing relaxed all-day dining and serving bistro style food at it's very best.

We pride ourselves on being independent and using locally sourced produce. To us supporting local businesses brings a sense of community which is what we try and create here at The Embankment.

## 'OUR PASSION IS IN THE FOOD THAT WE SERVE AS WELL AS THE DRINKS THAT WE POUR.'

Have any questions or queries? We'd be happy to hear from you. We're looking forward to seeing you soon, stop by and say hello.

## HOW TO FIND US



## DINE, DRINK AND DANCE ALL UNDER ONE ROOF

Swans Nest Lane, Stratford upon Avon, CV37 7LS, United Kingdom

+44 1789 293692

[events@the-embankment.co.uk](mailto:events@the-embankment.co.uk)

What3words: ///allows.rugs.anyway



About Us





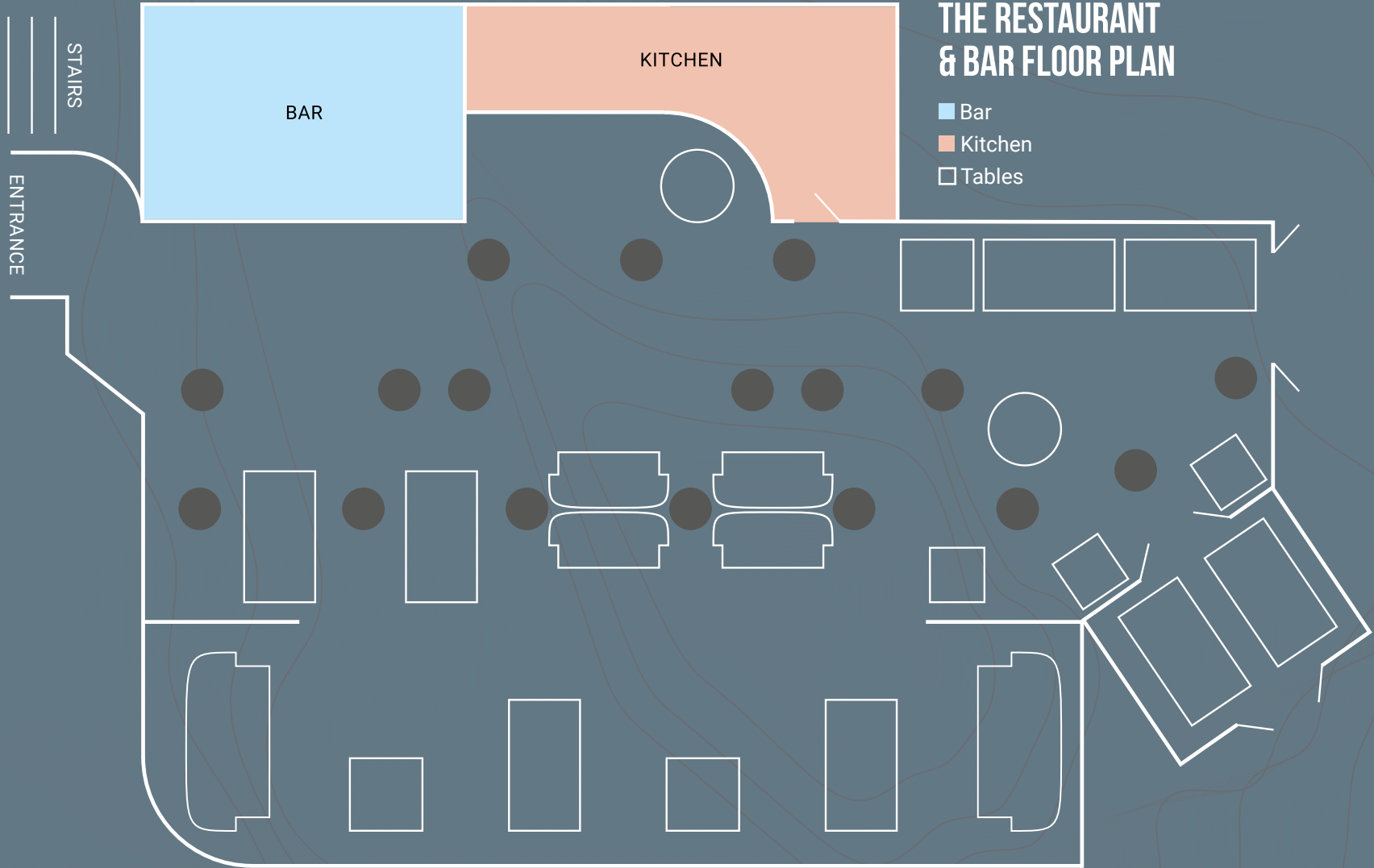
**The Main Restaurant** can be booked out for private parties, receptions and social gatherings as an alternative to the garden room and you also benefit from direct access to the Embankment's iconic terrace.

**Not available between May and September.**

# Restaurant & Bar

**CAPACITY**  
 180  
 120





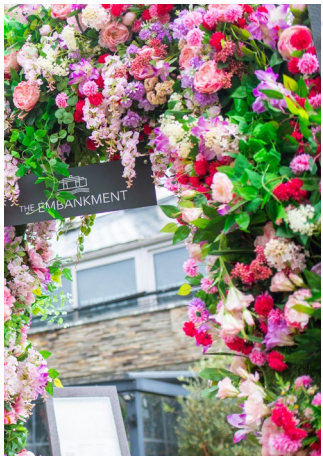
CAPACITY

180

120

» »





**WHERE EVERY SEAT FEELS LIKE SUMMER!**

Our beautiful alfresco beer garden can be sectioned off and divided into smaller spaces depending on your group size or you can hire the whole space for up to **150** people.



# Beer Garden

**CAPACITY**

150  
120





## COSY OUTDOOR RETREAT

Tucked away in our vibrant beer garden, the Pergola Pods offer a rustic, semi-private space for relaxed gatherings with friends, family or colleagues. Framed by natural greenery and dressed in twinkling fairy lights by night, these charming wooden structures bring a touch of warmth and atmosphere to any occasion.



*Pergolas*

SEMI-PRIVATE, FULLY MAGICAL!

CAPACITY  
25  
16







## INTIMATE, ELEGANT & FULL OF NATURAL LIGHT

Nestled alongside the terrace and overlooking the picturesque riverside, The Glass House is our beautifully styled, light-filled space — perfect for private parties, small celebrations, and intimate gatherings all year round.

# Glass Houses

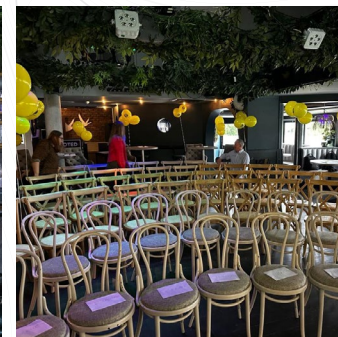
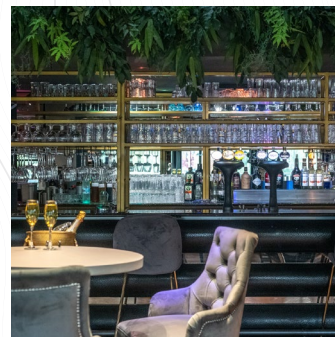
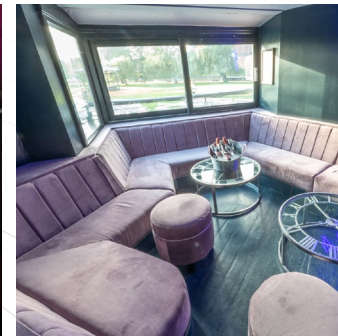
SMALL  
GLASS HOUSE 16

LARGE  
GLASS HOUSE 45





**The Garden Room** is The Embankment's hidden gem situated on the first-floor. It is a delightfully contemporary space with views across the River Avon, perfect for drinks, dining or dancing. This space will transport guests to feeling like they're in the great outdoors, with its verdant foliage growing up from the ground and hanging from the walls.



# Garden Room

CAPACITY  
180  
120





# PLANNING YOUR CORPORATE EVENT WITH US COULDN'T BE EASIER....

Whatever your business meeting, conference or corporate entertainment requirements, our team will be able to assist with your enquiry. We have a selection of areas to cater for any business occasion from a private dinner party to a meeting room, lunch or business breakfast, a training seminar or product launch.



**DELEGATE DAY  
RATE OF 49PP**

**HOSTING  
STRATFORD**



## PACKAGE

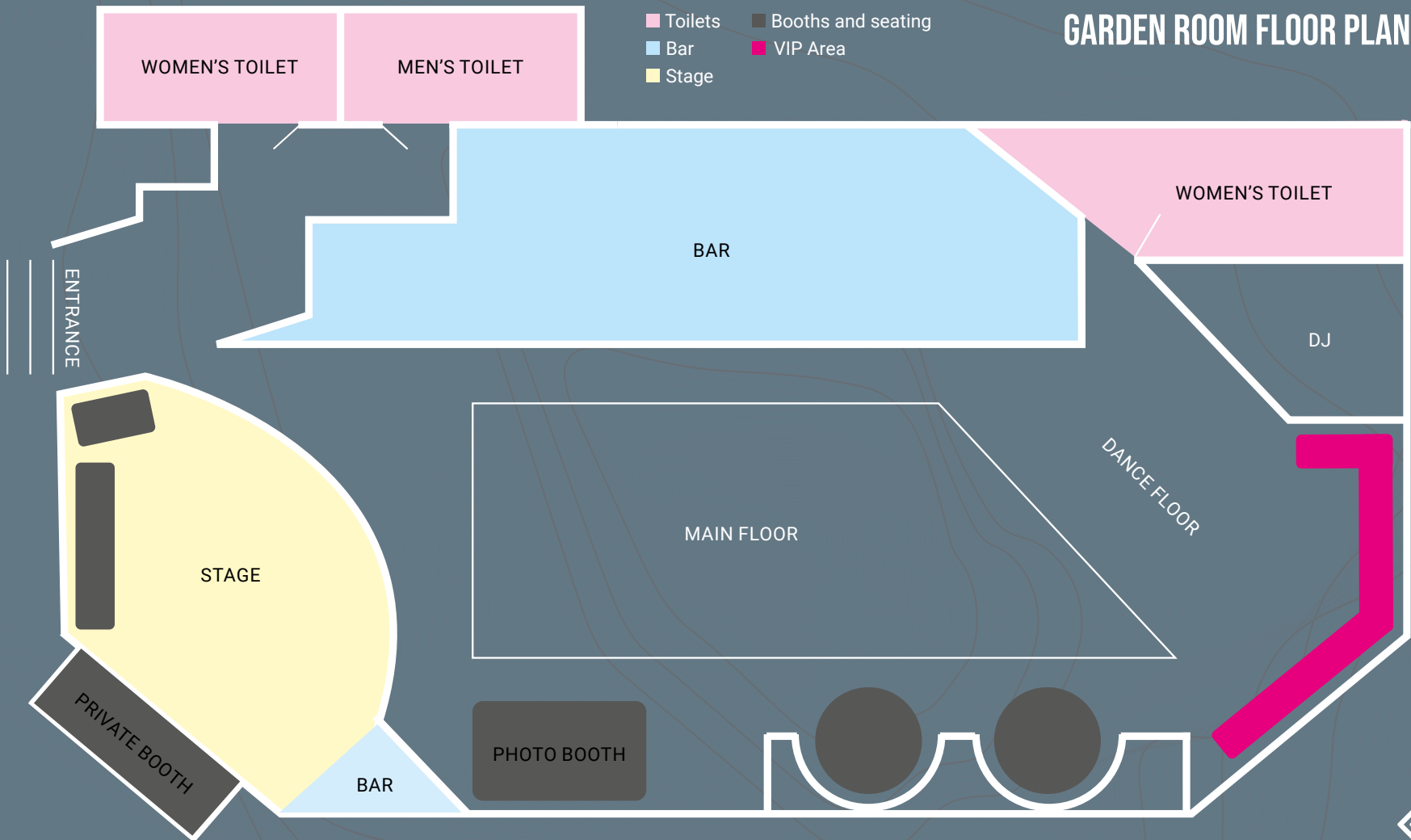
- **On Arrival:** Tea, Coffee & Pastries.
- **Mid-Morning:** Tea, Coffee & Biscuits
- **2 Course Lunch:** Served in the main restaurant or Working Buffet lunch with a choice of 6 items
- **Afternoon:** Tea, Coffee, Cake & Filtered Water
- **Meeting Room Equipment:** LCD Screen, Flip Chart, Airtime, WiFi, Nibbles/Sweets on Table, Pens & Paper
- Room Hire
- Ample paid parking



# Meetings & Events

**CAPACITY**  
160  
100  
»

# GARDEN ROOM FLOOR PLAN





## GARDEN ROOM FUNCTION ROOM HIRE:

### CAPACITY

The garden room can only be used for events with a maximum number of 180 attendees as specified by the venue.

### FREE ROOM HIRE

For a specified duration (e.g., 4 hours) with a minimum spend of £1000 for Saturday Evening.

### MINIMUM SPEND

Any amount spent on food and beverages during the event will contribute towards meeting the minimum spend. If the minimum spend is not met, the hirer will be charged the remaining balance to fulfil the requirement.

### DEPOSIT

The hirer pays a deposit upfront and any packages, food options for the event.

### CLEAN-UP

The room must be returned to its original condition after the event, including removal of all decorations. Any decorations left on site will be disposed of by the venue if not claimed.

### DAMAGE

The hirer is responsible for any damage to the room or its contents and must reimburse the venue for the cost of repairs.

### SECURITY

If the venue may require security personnel to be present at the event, at the hirer's expense. After 11pm = £50 per hour.

### DECORATIONS

Decorations must be approved by the venue in advance and may not damage the walls, floor, or ceiling. The use of adhesives, nails, tape, confetti and confetti balloons are not permitted.

### ALCOHOL

The serving of alcohol is subject to local laws and regulations and must be arranged with the venue in advance. We also do not allow you to bring your own alcohol and do not do corkage.

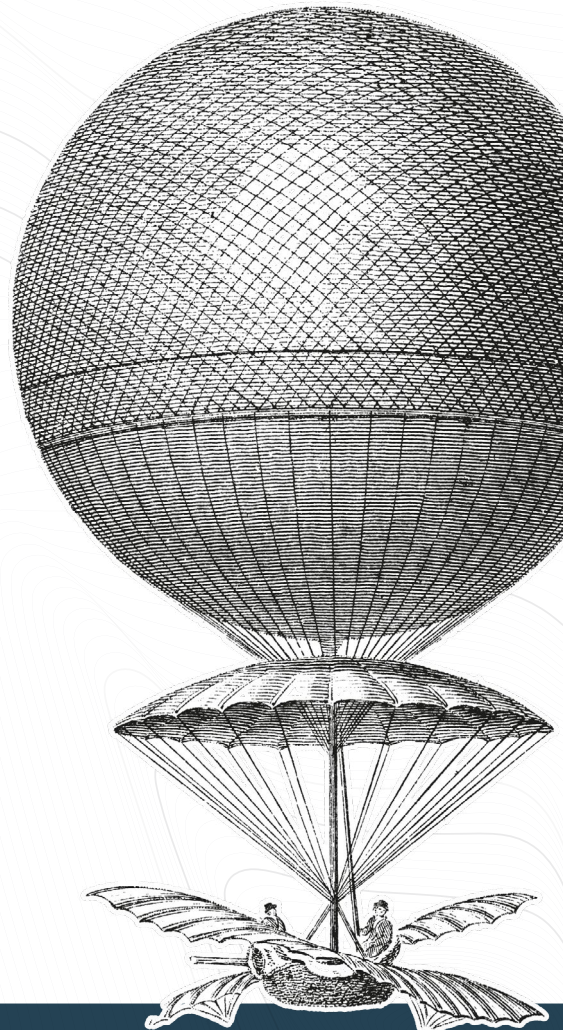
### CATERING

Catering must be provided by the venue, and the hirer must follow all food and beverage policies, and we do not allow outside caterers

### DJS & ENTERTAINMENT

The venue can provide Djs at a cost £250 (4 hrs) for any genres or can allow the hirer to plug into our in-house system and play through an ipad/ tablet or phone. We can recommend local band/ artists to suit your requirements. Hirers are able to bring their own DJ's and bands but will need to bring their own equipment.

The hirer may cancel the booking within 3 months sufficient notice for 100% refundable deposit, 28 days 50% deposit and anything under this period will not be non-refundable.



THE-EMBANKMENT.CO.UK

*Terms & Conditions*



# BUFFET MENU

TUCK INTO OUR  
PICK 'N' MIX SELECTION  
CHOOSE ANY

6 FOR 18.95PP  
8 FOR 23.95PP

## TANDOORI CHICKEN SKEWERS GF

With cucumber & mint raita.

## SMASHED AVOCADO & TOMATO CRACKERS VE, GF

With micro coriander.

## SPICED LAMB KOFTA GF

With cucumber raita.

## TOMATO & RED PEPPER HUMMUS VE, GF

With crispy chickpeas.

## SPICED CHICKEN PAKORA

With mango ketchup.

## BEEF SLIDERS

With melted cheese & dill pickle.

## LEMON & HERB SCAMPI BITES

With tartare sauce.

## CHORIZO SAUSAGE ROLL

## BUTTERMILK CHICKEN GOUJONS

With chipotle mayo.

## VEGAN SAUSAGE ROLL VE

## CRAYFISH TACO

With mango & lime salsa.

## MEDITERRANEAN VEGETABLE FLATBREAD VE

With basil pesto.

### ADD A SIDE OR SALAD FOR 2.95PP

#### CAESAR SALAD GFA

Croutons, parmesan & caesar dressing.

#### ASIAN SALAD VE, GF

With pickled ginger, plum & hoi sin dressing.

#### TOASTED FLATBREADS VE

With extra virgin olive oil.

#### SEASONED FRIES VE, GF

Topped with cornish sea salt.

We are proud to cook from fresh and do so as quickly as quality allows. (GF) dishes are gluten free and (GFA) have a gluten free option available, (V) dishes are vegetarian, (VE) dishes are vegan and (VEA) have vegan options available, (DF) dishes are dairy free and (DFA) have a dairy free option available. Wheat, nuts and shellfish are in daily use in our kitchen. If you have a food allergy or intolerance, please speak to a member of staff before you order your food and drinks. All weights are approximate and are taken prior to cooking. VAT is included at the current rate.





# SIGNATURE MENU

29.95 PER PERSON

## ADD A TRADITIONAL BRITISH CHEESEBOARD FOR AN ADDITIONAL 6.95PP?

Served with mulled apple  
chutney, celery, grapes,  
quince jelly, rye toasts &  
crackers.

### TO START

**CHEFS HOMEMADE SOUP OF THE DAY** VE, DF, GFA

**CHILLI POPCORN SQUID**

Garlic, chilli & coriander.

**TOMATO & RED PEPPER HUMMUS** VE

With warm flatbreads.

**CHARRED TANDOORI CHICKEN SKEWERS**

Salad garnish & mint yoghurt.

### TO FOLLOW

**\*8oz RUMP STEAK** ADD £4, GF

Seasoned fries, confit tomatoes, portobello mushrooms  
& garlic butter.

**SMASHED DEXTER BURGER**

28 day aged beef, melted cheese, dry cured bacon,  
pickle & fries.

**FUNGI GARDEN** VEGAN AVAILABLE

San marzano tomato base, mozzarella,  
portobello & ricotta, spinach with tender stem broccoli.

**CRISPY BATTERED HADDOCK**

Minted pea puree, lemon, tartare & fries.

**HOT HONEY HALLOUMI BOWL** V

Coriander & lime rice, shredded cos, tomato salsa,  
black beans, sweetcorn & guacamole.

### TO END

**LOTUS BISCOFF CHEESECAKE**

Golden crumb, banana crisps & butterscotch.

**ICES & SORBETS** VE

Berry compote.

**GLAZED LEMON TART** V

Macerated strawberries.

**CHOCOLATE BROWNIE**

Raspberries, cookies & cream gelato.

## WHY NOT PRE ORDER SOME WINE?

### FOR 24PP

Enjoy a glass of Prosecco and half a bottle of  
Pinot Blush, Rosé, Picpoul de Pinet **or** Malbec.

### FOR 19PP

Enjoy a glass of Prosecco and half a bottle of  
Pinot Rosé, (CH) Sauvignon Blanc **or** Shiraz.

We are proud to cook from fresh and do so as quickly as quality allows. (GF) dishes are gluten free and (GFA) have a gluten free option available, (V) dishes are vegetarian, (VE) dishes are vegan and (VEA) have vegan options available, (DF) dishes are dairy free and (DFA) have a dairy free option available. Wheat, nuts and shellfish are in daily use in our kitchen. If you have a food allergy or intolerance, please speak to a member of staff before you order your food and drinks. All weights are approximate and are taken prior to cooking. VAT is included at the current rate.



# CHEFS' SELECTION

## 39.95 PER PERSON

### WHY NOT PRE ORDER SOME WINE?

#### FOR 24PP

Enjoy a glass of Prosecco and half a bottle of Pinot Blush, Rosé, Picpoul de Pinet or Malbec.

#### FOR 19PP

Enjoy a glass of Prosecco and half a bottle of Pinot Rosé, (CH) Sauvignon Blanc or Shiraz.

### ADD A TRADITIONAL BRITISH CHEESEBOARD FOR AN ADDITIONAL 6.95PP?

Served with mulled apple chutney, celery, grapes, quince jelly, rye toasts & crackers.

## NIBBLES

---

ENJOY A SELECTION FOR THE TABLE.

### NOCELLARA OLIVES GF, DF, VE

Sundried tomatoes & lemon.

### RUSTIC BREAD VE, DFA

Balsamic, aged oils.

### EDAMAME BEANS VE

Soy, chilli, garlic.

## TO START

---

### CHEFS HOMEMADE SOUP OF THE DAY VE, DF, GFA

### GRILLED GOATS CHEESE TART v

Salt baked beetroot & horseradish crumble.

### PRAWN COCKTAIL LOLLIPOPS

Sweet chilli marie rose & gem lettuce.

### SPICED LAMB KOFTAS DF, GF

With asian slaw.

### PANKO COATED HALLOUMI FRIES v

Mint & sticky pomegranate molasses.

We are proud to cook from fresh and do so as quickly as quality allows. (GF) dishes are gluten free and (GFA) have a gluten free option available, (V) dishes are vegetarian, (VE) dishes are vegan and (VEA) have vegan options available, (DF) dishes are dairy free and (DFA) have a dairy free option available. Wheat, nuts and shellfish are in daily use in our kitchen. If you have a food allergy or intolerance, please speak to a member of staff before you order your food and drinks. All weights are approximate and are taken prior to cooking. VAT is included at the current rate.

## TO FOLLOW

---

### TANDOORI MARINATED SALMON DF, GF

Bombay potatoes, asian greens & coconut.

### \*10OZ RIB EYE ADD £5, GF

Seasoned fries, confit tomatoes & garlic butter.

### POACHED CHICKEN BREAST

Crispy gnocchi "patatas bravas", chorizo crisps & rocket.

### PANKO TOFU TONKATSU VE

With steamed rice, katsu sauce, charred lime & coriander.

### KOREAN BEEF TACOS

With kimchi & sriracha mayonnaise, street style on warm mini tortillas with a bowl of seasoned fries.

## TO END

---

### ETON MESS

Mango, passion fruit & ginger.

### SNICKERS BANANA SPLIT

Chocolate gelato & shortbread crumb.

### KEY LIME PIE v

With chantilly cream & fresh lime.

### EMBANKMENT GELATO v, GFA

Vanilla bean, cookies & cream & triple chocolate.

### RASPBERRY & YOGHURT SORBET VE





# BBQ GRILL MENU

MINIMUM OF 25 PERSONS

CHOOSE - 3 MAINS, 3 SIDES  
& 2 DIPS FOR 20PP

CHOOSE 5 MEATS, 3 SIDES  
& 3 DIPS FOR 30PP

WHY NOT PRE  
ORDER SOME WINE?

FOR 24PP

Enjoy a glass of Prosecco and  
half a bottle of Pinot Blush, Rosé,  
Picpoul de Pinet or Malbec.

FOR 19PP

Enjoy a glass of Prosecco  
and half a bottle of Pinot Rosé,  
(CH) Sauvignon Blanc or Shiraz.

## MEAT

SICILIAN LEMON & ENGLISH THYME ROASTED

CHICKEN THIGHS GF, DF

TANDOORI CHICKEN BREAST SKEWERS GF, DF

With tamarind glaze.

PERI PERI CHICKEN DRUMMERS GF, DF

HOMEMADE BEEF BURGER & SMOKED CHEESE GFA, DFA

FREE RANGE LAMB & MINT BURGERS GFA, DFA

MAPLE CURED HOT DOGS DF

CHINESE SPICED PORK BELLY GF, DF

MOROCCAN SPICED LAMB KOFTAS DF

CHIMICHURRI MARINATED MINUTE SIRLOIN STEAK GF, DF

## FISH

WHITBY POPCORN SHRIMP DF

With lemon & caper dressing.

TERIYAKI SALMON SUPREME DF, GF

With sesame glaze.

UNAMI BUTTER ROASTED SHELL

ON KING PRAWNS (SUP £2.50) DFA, GF

## VEGETARIAN

SWEET CHILLI HALLOUMI & VEGETABLE KEBABS GF, DF, V

ROASTED MEDITERRANEAN SKEWERS GF, DF, VE

LIGHTLY SPICED BEYOND MEAT KOFTAS DF, VE

VEGETARIAN SAUSAGE AND BURGERS DF, VE

## SIDES

CORN ON THE COB GF, DFA, V, VEA

JACKET POTATOES GF, V

With Herb Butter.

ASIAN SLAW GF, DF, VE

DRESSED CAESAR SALAD DF, V

PROPERLY SEASONED FRIES DF, GF, VE

JERSEY ROYAL POTATO SALAD GF, DF

With crispy bacon.

TOASTED FLATBREADS DF, V

ARTISAN BREADS DF, V

MEDITERRANEAN SALAD V

## DIPS

THAI SWEET CHILLI VE, V, GF, DF

BOURBON BBQ SAUCE V, DF

TOMATO KETCHUP VE, V, GF, DF

ROASTED GARLIC ALIOLI V, GF, DF

CHIPOTLE MAYO V, GF, DF

MINT RAITA V, GF

We are proud to cook from fresh and do so as quickly as quality allows. (GF) dishes are gluten free and (GFA) have a gluten free option available, (V) dishes are vegetarian, (VE) dishes are vegan and (VEA) have vegan options available, (DF) dishes are dairy free and (DFA) have a dairy free option available. Wheat, nuts and shellfish are in daily use in our kitchen. If you have a food allergy or intolerance, please speak to a member of staff before you order your food and drinks. All weights are approximate and are taken prior to cooking. VAT is included at the current rate.



## WINES

**BUILD YOUR OWN DRINKS PACKAGE TO HAVE READY ON ARRIVAL**

BOTTLE OF PROSECCO	30.00
BOTTLE OF PINK PROSECCO	30.00
BOTTLE OF PINOT GRIGIO/SAUVIGNON BLANC/CHARDONNAY	19.00
BOTTLE OF HOUSE WHITE ZINFADL/ PINOT ROSATA ROSÉ	22.00
BOTTLE OF HOUSE MERLOT/SHIRAZ	19.00

**BUY 6 BOTTLES OF WINE AND GET A BOTTLE FREE**

## WELCOME DRINKS

PROSECCO RECEPTION*	7.00 PP
CHAMPAGNE RECEPTION*	15.50 PP
GLASS OF PROSECCO & AN EMBANKMENT SIGNATURE SHOT	8.50 PP
GLASS OF PROSECCO, EMBANKMENT SHOT & A BARTENDER RECOMMENDED COCKTAIL	17.00 PP

**TOAST YOUR NIGHT** WITH SHOTS, SHOTS, SHOTS    5 FOR 22.00 | 10 FOR 41.00

BABY GUINNESS	JÄGER BOMB
PORNSTAR BOMB	SKITTLE BOMB

## DRINKS TOKENS

**THE DRINKS WILL INCLUDE:**

- Bottled beer of Peroni or Corona or non-alcoholic beer or ale
- Pint of madri/aspaal Cider or Salt Alpacalypse Session IPA
- Any 2 Soft drinks from coca cola, coke zero, fruit juices, lemonade or hot drink
- Standard 25ml spirit (vodka, gin, whisky, archers, malibu, spiced rum & mixer
- 125ml Glass of prosecco
- 175ml of wine- sauvignon blanc (ch), pinot blush, white zinfandel or merlot

6.00 PP

## BEER BUCKETS

**12 BOTTLES INCLUDED. CHOOSE ANY 3 FROM THE CATEGORY**

**LAGER** 55.00

Peroni, Corona

**CIDERS** 65.00

Old Mout Berries & Cherries, Pineapple & Raspberry or Rekordlig Strawberry & Lime

**CRAFT** 60.00

Ask for details of our bartenders choice

## NON ALCOHOLIC

Birra Morretti, Corona Cero, Guinness 0.0% or Old Mout Pineapple & raspberry

## COCKTAILS

**BARTENDER RECOMMENDED COCKTAILS** 23.50

3 of the same cocktail included - please ask for details

**COCKTAIL FLIGHT - 3 COCKTAILS\*** 27.00

**GIN FLIGHT - 3 GIN SERVES (50ML)\*** 25.00

Choose 3 gins from our signature serves

**COCKTAIL TREE - 10 COCKTAILS** 80.00

Choose 2 of our House Cocktails.\*

## SOFTS PACKAGES

**CHOOSE FROM A SELECTION OF 10 SOFT DRINKS** 25.00

Coke, Coke zero, Energy Drink, choice of Orange, Pineapple, Apple or Cranberry Juice.

## ADD TEAS OR COFFEES

We have a range of teas and coffees available, so just let us know.

*Drinks Packages*





## DRESS CODE

Hey, we are not the fashion police at the Embankment, Stratford Upon Avon so we are not going to tell you what to wear. We have a relaxed smart casual dress code through daytimes, although we will question sportswear, hats, and hoodies in the evenings. Any clothing containing offensive slogans, or any other inappropriate clothing are not permitted.

For us it's more about your attitude. We are a great bar for friendly folk. so wear a smile! The venue allows fancy dress as long as its kept appropriate and not offensive however no inflatables. We operate a challenge 25 ID policy and management do reserve all rights of entry and management accepts no responsibility for lost, damaged or stolen property within the venue.

This also applies to all pre-booked parties and bookings.

## DISABLED ACCESS POLICY

We regret to inform our guests that our venue does not currently have toilets specifically designed for individuals with disabilities. However, full disabled access is recommended through our main doors located in the car park.

We understand that this may pose challenges for some of our guests and apologise for any inconvenience this may cause.

If you have any specific requirements or concerns regarding accessibility, please contact us in advance of your visit so that we can do our best to accommodate your needs. Our staff will be happy to assist you in finding the nearest accessible disabled toilet facilities (in the public toilets in the adjacent building).

We have no lift in the venue so cannot offer disabled access on our upstairs first floor level. We are committed to making our venue as accessible as possible for all guests and welcome feedback on ways in which we can improve our facilities.

Please note that while we make every effort to provide a safe and accessible environment, we cannot guarantee the suitability of our venue for all individuals with disabilities.

We appreciate your understanding and hope that you will still be able to enjoy your time at our venue.

## MUSIC POLICY

Cool commercial mixes covering Chart, Indie, Disco, Pop, Commercial House, RnB and anything retro. Embankment Stratford Upon Avon has a fine array of varied artists and performances throughout the week ranging from Live Bands, Acoustic Sets, our resident DJ's and Live Percussion. Please check our events page for up and coming events.

## UNDER 18 POLICY

Under 18's are not permitted to be in the venue after 9:30pm Friday & Saturday and after 10:00pm Sunday to Thursday. Under 16's must be accompanied by an adult.

## IDENTIFICATION

The Embankment Bar Stratford-upon-Avon has a legal obligation to check the identification of all customers to verify their age. Acceptable forms of identification include a passport, driving license, or government-issued ID card with a photograph.

The Embankment Bar Stratford-upon-Avon reserves the right to refuse entry or ask individuals to leave if their behaviour is deemed inappropriate or if they are in breach of this policy. By visiting The Embankment Bar Stratford-upon-Avon, minors and their supervising adults agree to adhere to this policy in its entirety.

## BABY CHANGING POLICY

We are committed to providing a welcoming and convenient environment for families with young children. We have baby changing facilities in the ladies & gents toilets located on the first floor of our building.

We appreciate your understanding and hope that this facility will help to make your visit to our venue more comfortable and enjoyable.

*Policies*

